

PRICE REDUCED! *Monterey Park Luxury Residence*

835 Crest Vista Drive, Monterey Park, CA 91754

FOR SALE

- Price: \$968,000
- MLS #: H11160132
- House size: 4,931 SF
- Lot size: 16,013 SF
- Stories: Two
- Year Built: 1963

Interior Features

- New flooring & Paint
- Bedrooms: 11
- Restrooms: 6
- HVAC: Cooling and Heating
3 separate units

Exterior Features

- City lights view
- Spacious back yard with a Zen garden
- Stunning large waterfall
- Bountiful fruit trees

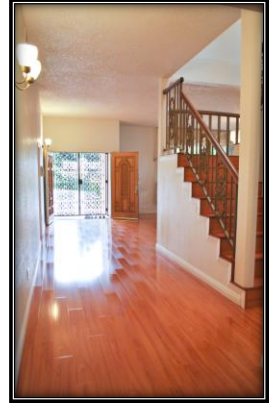
Please call for appointments at least 24 hours in advance. Thank you!



STC

**資產管理
MANAGEMENT**

Lic. No. 01299442



Dalerie Wu

INVESTMENT MANAGER

562.639.6849

dalerie@stcmanagement.com

The information above has been obtained from sources believed reliable. While we do not doubt its accuracy we have not verified it and make no guarantee, warranty or representation about it. It is your responsibility to independently confirm its accuracy and completeness. Any projections, opinions, assumptions, or estimates used are for example only and do not represent the current or future performance of the property. The value of this transaction to you depends on tax and other factors which should be evaluated by your tax, financial, and legal advisors. You and your advisors should conduct a careful, independent investigation of the property to determine to your satisfaction the suitability of the property for your needs.

10722 Beverly Blvd., Suite P • Whittier, CA 90601 • Tel (562) 695-1513 • Fax (562) 695-1834 •

w w w . S T C m a n a g e m e n t . c o m